



# C/1 – Organization Chart

EFFECTIVE: July 3, 1985

REVISED: January 25, 2017

REVIEW: 2022-2023

## 1.0 POLICY

- 1.1 The Board of Trustees, which is responsible for providing high quality educational programs for students, acknowledges the necessity of discharging this responsibility through a well-ordered administrative and management structure.
- 1.2 The Superintendent of Schools, as the Chief Executive and Educational Officer for the division, is responsible for the effective functioning of an appropriate administrative and management structure within the budget guidelines established by the Board.
- 1.3 The Board expects the Superintendent to keep the management structure up-to-date and able to respond to the changing needs of the school system.
- 1.4 To this end, the Superintendent may re-organize lines of authority and revise the Organizational Chart, subject to Board approval. Any permanent changes to the Organization Chart shall be implemented only upon Board approval.
  - 1.4.1 Additional staff positions may, however, be added on a temporary basis, from time to time, as required and as approved by the Superintendent, and as advised to the Board.
- 1.5 All division employees are accountable to the Superintendent. The Superintendent is accountable to the Board of Trustees.

---

References: Organizational Chart

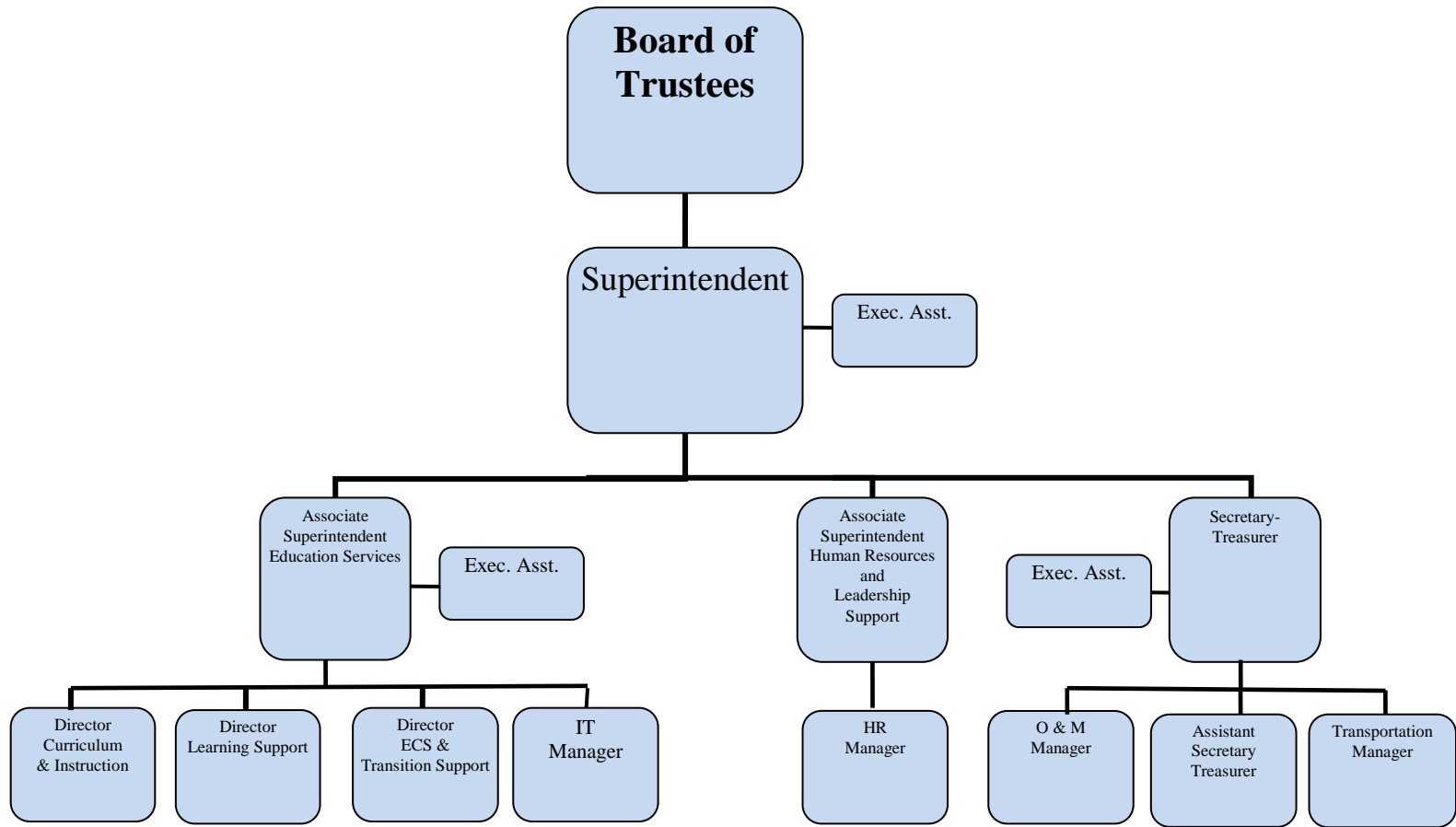


# C/1 – Organization Chart

EFFECTIVE: July 3, 1985

REVISED: January 25, 2017

REVIEW: 2022-2023



References: